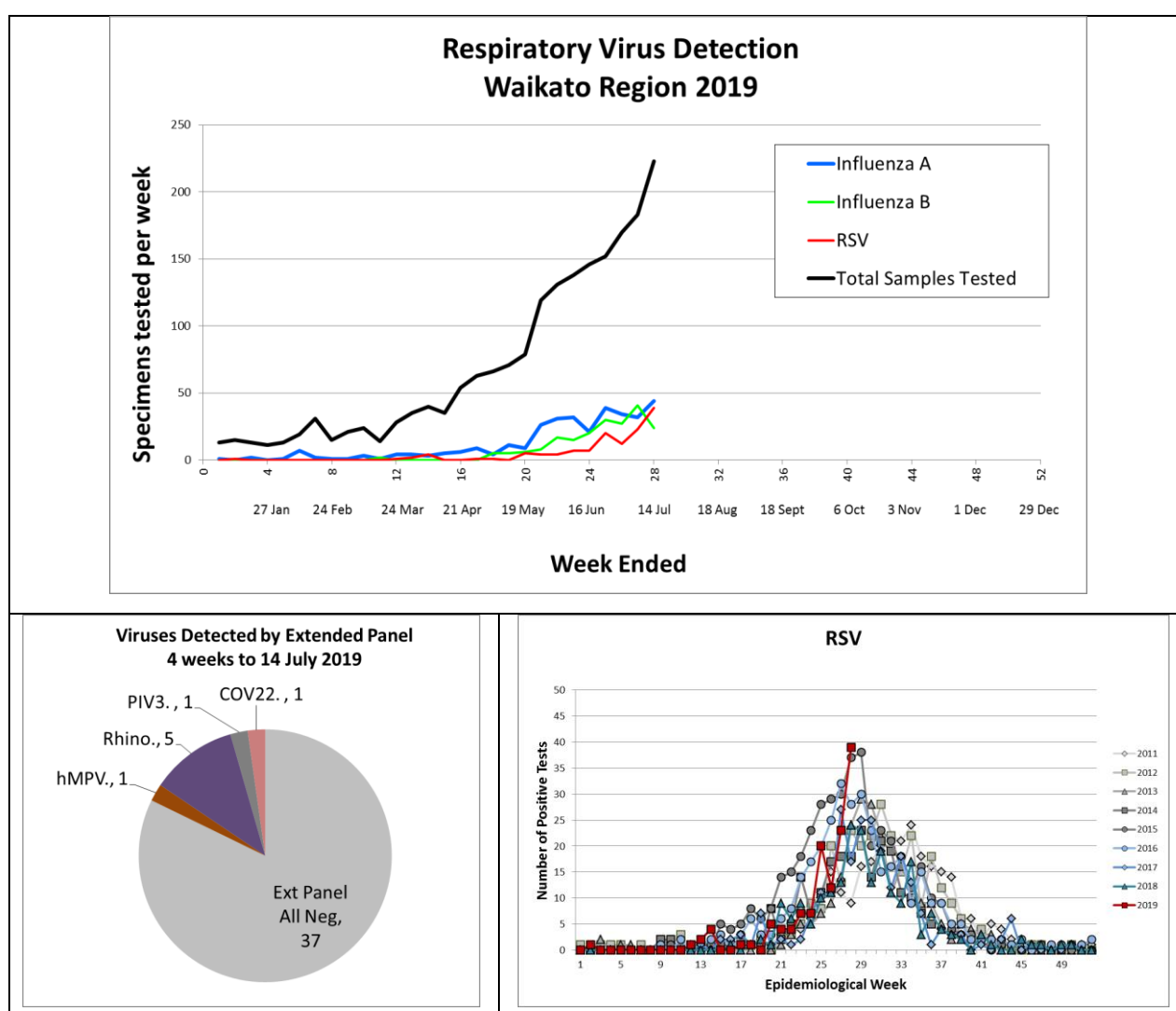


Waikato Respiratory Virus Report

Week 28 2019

Week to 14 July 2019

Both Influenza A and B numbers remain high. RSV is at typical peak winter rates. Dr Sue Huang from the NZ Influenza reference laboratory in Wellington advises that the Influenza B strain circulating is from the Victoria lineage and is very close to the Colorado strain in the 4 valent vaccine. In the community, this is the predominant virus. The Influenza A circulating is H3N2 and, like last year, is a bit difficult to culture and work with, but there seem to be a number of isolates which the vaccine may offer lower protection against. For Both A and B strains, the vaccine does reduce disease severity, even if a person is still infected. Effectiveness is greater against ICU admission than against less severe infection.



Waikato laboratory web site and virus report archive:

<https://lab.waikatodhb.health.nz/news/>

NZ National Surveillance:

<https://www.esr.cri.nz/our-services/consultancy/flu-surveillance-and-research>

Global surveillance

<https://www.who.int/influenza/resources/charts/en/>