

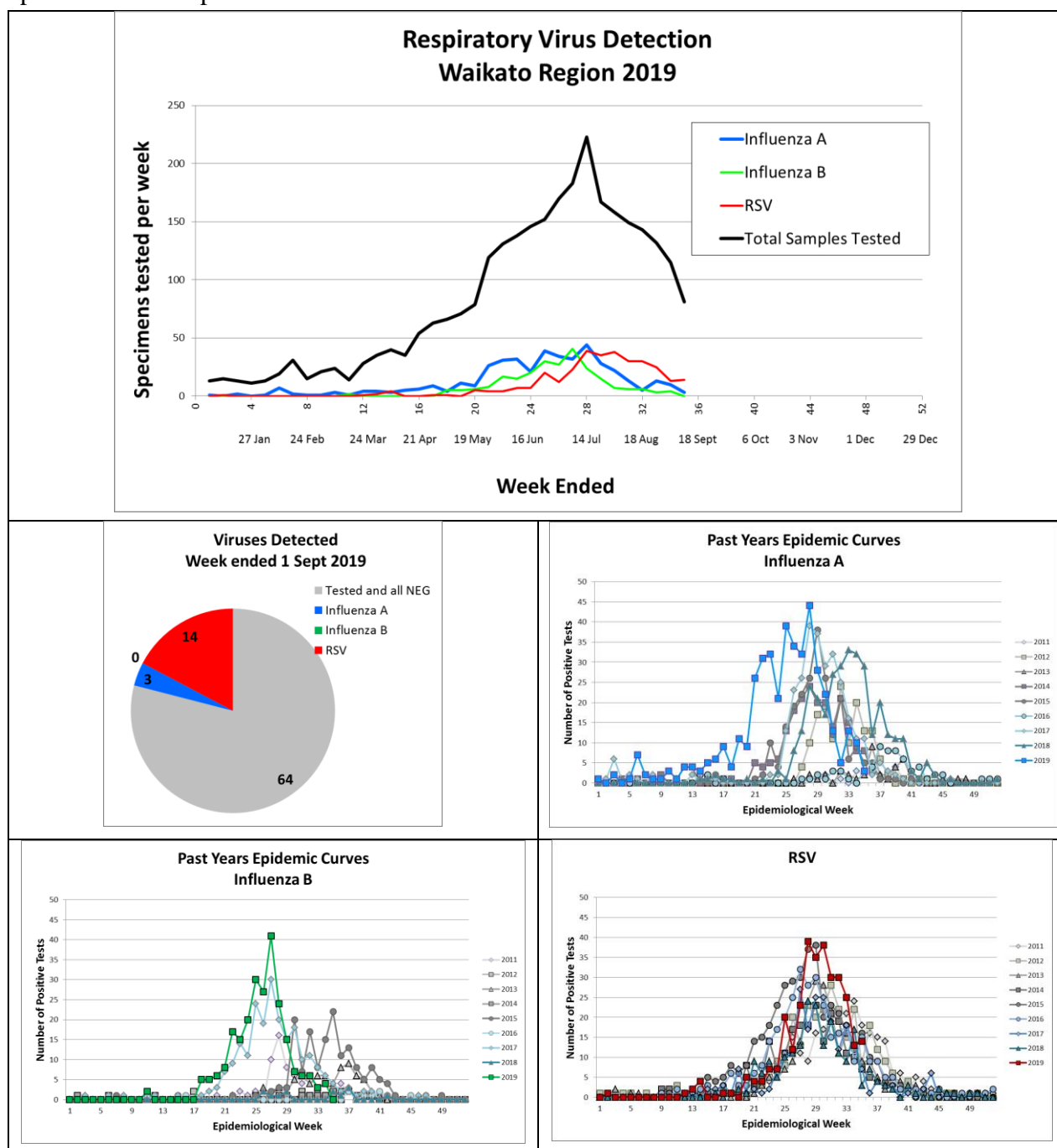
Waikato Respiratory Virus Report

Week to 1 Sept 2019

Week 35 2019

Influenza A and B are now at similar levels to those we saw last summer and autumn, with a few cases each week.

Compared to previous years, this was an early season for Influenza A and with relatively high numbers. 2019 was also an epidemic year for Influenza B, with intensity and timing similar to 2016. For New Zealand as a whole, “Influenza Positive Illness” seen by GPs has paralleled our experience in the Waikato.



Waikato laboratory web site and virus report archive: <https://lab.waikatodhb.health.nz/news/>

NZ National Surveillance: <https://www.esr.cri.nz/our-services/consultancy/flu-surveillance-and-research>