

Waikato Respiratory Virus Report

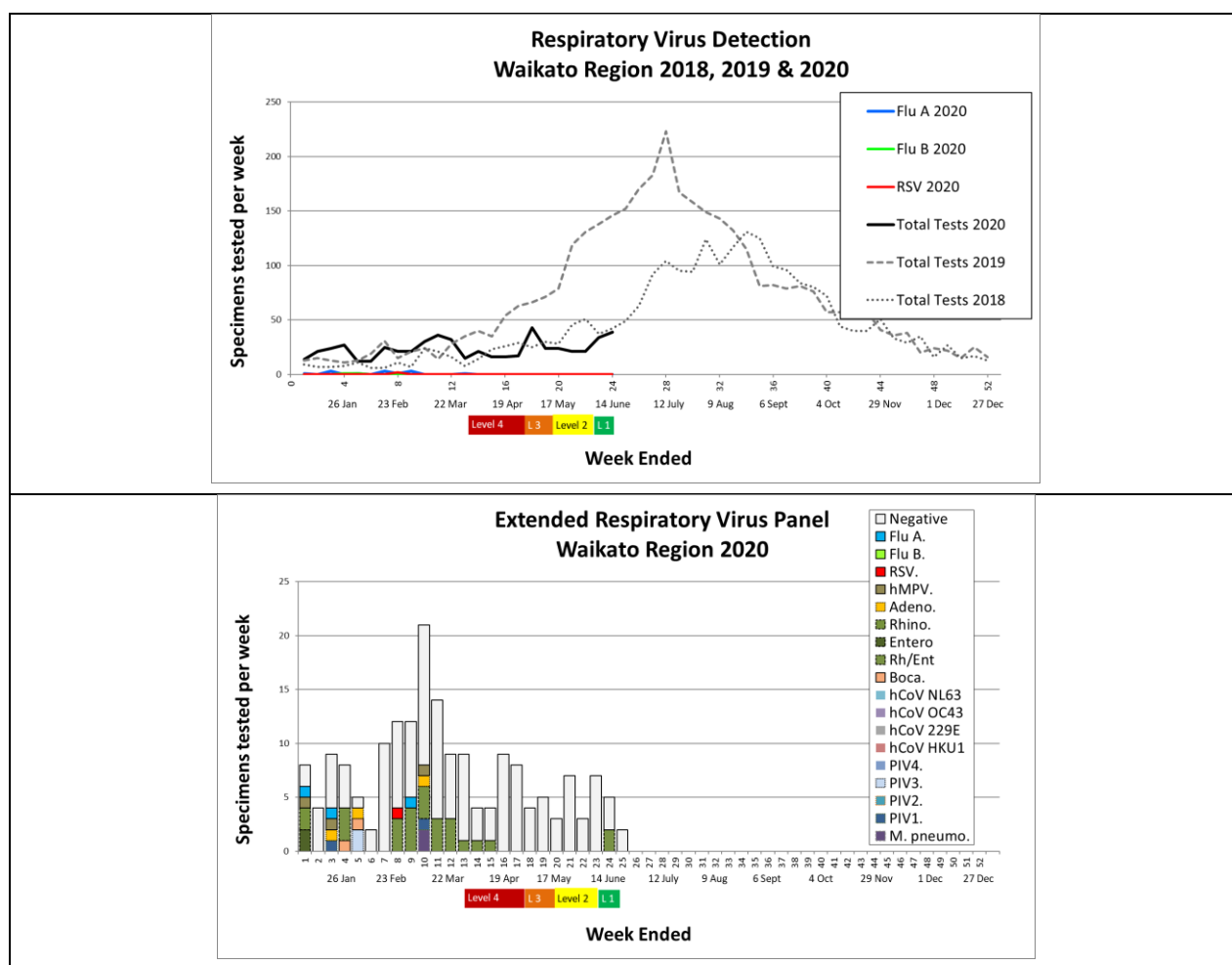
Week 24 2020

Week to 14 June 2020

Weekly specimen numbers are tracking similarly to what we saw in 2018. In addition, we are testing 2-300 swabs for COVID each day. No Influenza or RSV has been found since COVID control measures were implemented.

Other respiratory viruses have also been below the threshold of detection since two weeks into Level 4. We have now found two Rhinovirus cases in the first week of level 1. There have also been two in the Bay of Plenty (M. Addidle). Anecdotally, General Practices are now seeing several cases of upper respiratory tract infection each day (C. Russell).

It appears that NZ Level 4 and 3 measures severely limited the circulation of all respiratory viruses, including SARS-CoV-2, but Levels 2 and 1 enable their return.



Waikato laboratory web site and virus report archive: <https://lab.waikatodhb.health.nz/news/>

Global Influenza surveillance: <https://www.who.int/influenza/resources/charts/en/>

WHO global COVID situation page: <https://www.who.int/emergencies/diseases/novel-coronavirus-2019>

NZ COVID numbers available at:

<https://www.health.govt.nz/our-work/diseases-and-conditions/covid-19-novel-coronavirus/covid-19-current-situation/covid-19-current-cases#summary>